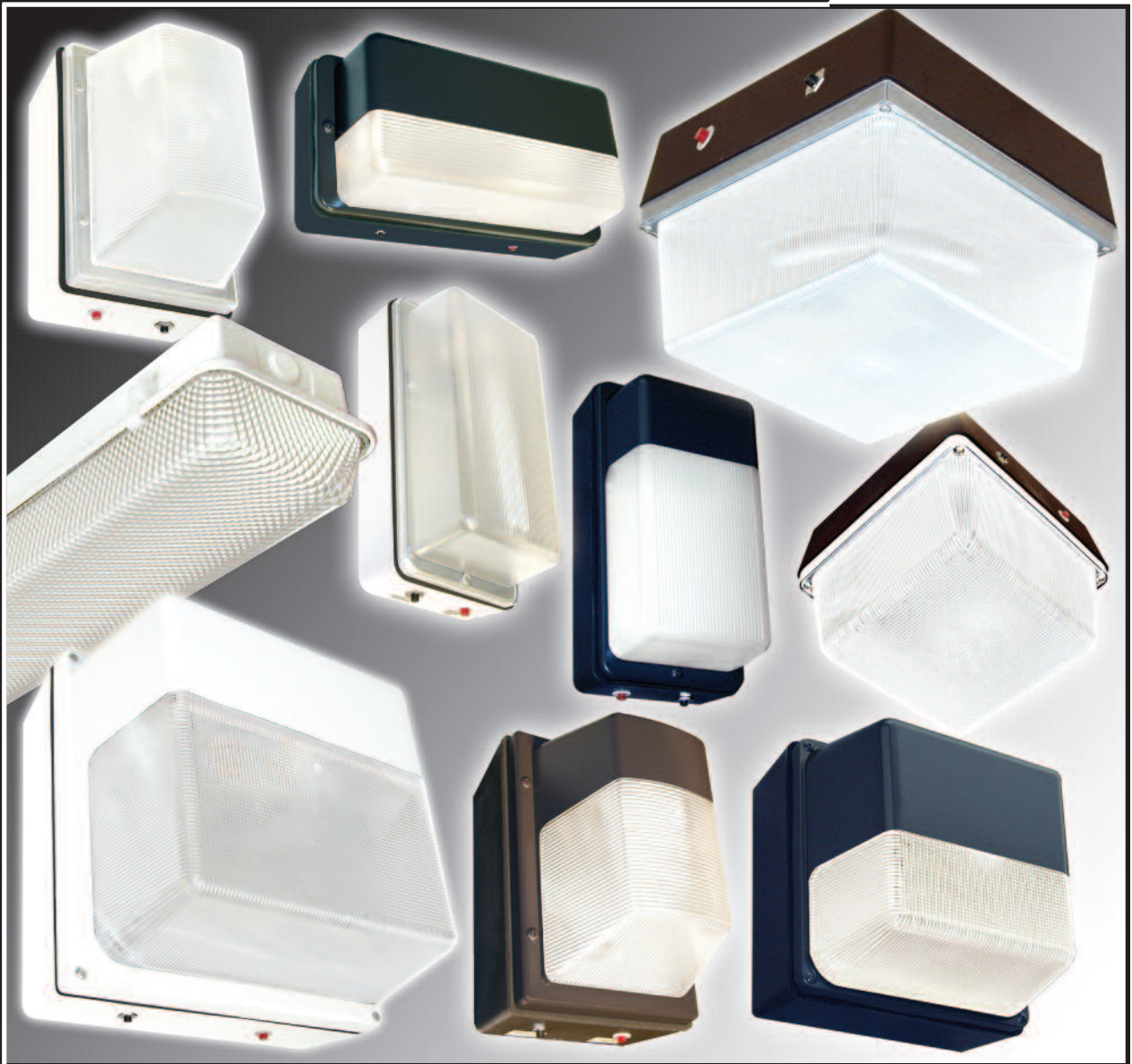


EMERGENCY LIGHTING

Largest Offering of LED and Non-LED Energy Efficient, Rustproof, Vandal Resistant, Nonconductive Emergency Luminaires in the Lighting Industry



FEATURES

- Energy Efficient • Rustproof • Vandal Resistant
- Nonconductive Polycarbonate Housings on Series 30, 300, 80, and 1200
- Marine-Grade Aluminum Base Plates (Excluding Linear Fluorescent Fixtures)
- 50Hz available on some models
- ETL Listed for Emergency Wet Locations
- Design Consistency - Complementary fixtures available without emergency battery packs to enhance your lighting design

OPTIONS

- Integrated Photo Control available for LED Series 1200
- Integrated Photo Control for Non-LED Series 300, 80 and 1200
- Stainless Steel Tamperproof Screws for Series 30, 300, 80, 1200, 220, 240, 140
- Tamperproof Latches for Series RS100, RS200
- Surface mount housing of powder-coated steel for 240 Series

CATALOG CODE	EMERGENCY FUNCTION (NON-LED LUMINAIRES)
EM (1 Lamp Fixture)	Lamp operates during normal conditions and operates during emergency.
EM (2 Lamp Fixture)	Both lamps operate during normal conditions; one lamp operates during emergency.
EM2 (2 Lamp Fixture)	Two lamps operate during normal conditions; two lamps operate during emergency.
EMO (1 Lamp Fixture)	One lamp only operates during emergency.
EMO1 (2 Lamp Fixture)	One lamp operates during normal conditions; one lamp operates during emergency.
EMO2 (2 Lamp Fixture)	Two lamps only operate during emergency.

30 SERIES

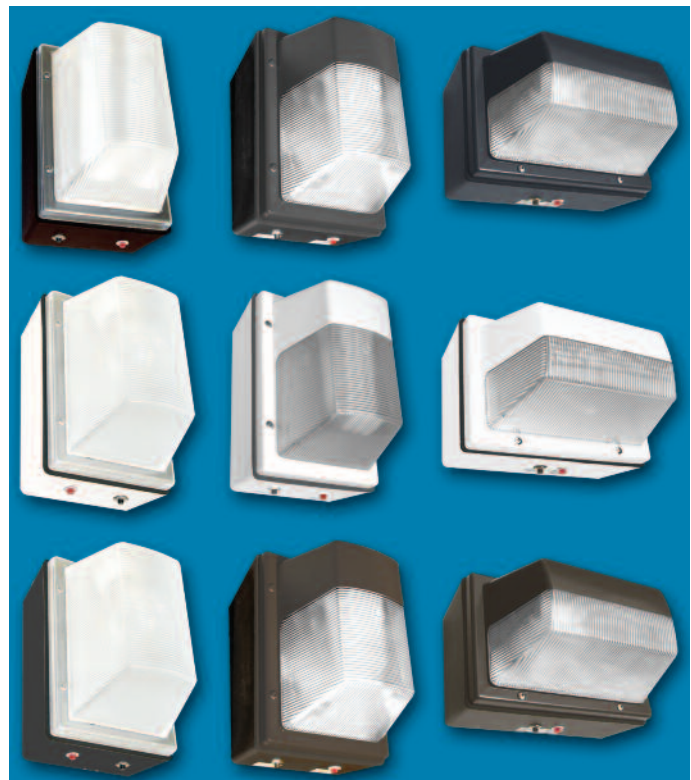
Applications: Indoor/Outdoor, Wall/Ceiling, Vertical/Horizontal
 Dimensions: 10" x 5" x 4³/₈"



Model 30 EM - LEDs operate during normal conditions and operate during emergency conditions.

300 SERIES

Applications: Indoor/Outdoor, Wall/Ceiling, Vertical/Horizontal
 Dimensions: 9" x 6" x 7³/₄"



EM	EM2	EMO	EMO1	EMO2
1-13 QD*	N/A	1-13 QD*	N/A	N/A
1-18 PLT	N/A	1-18 PLT	N/A	N/A
1-26 PLT	N/A	1-26 PLT	N/A	N/A
1-32 PLT	N/A	1-32 PLT	N/A	N/A

*HPF High Power Factory only.

Various Lens styles include Frosted Clear (LED models) and Clear Prismatic polycarbonate for high lumen output with or without Black, White, or Bronze masking. (When lower/softer lumen output is desired, Opal White polycarbonate Lens styles are available.) Offering includes complementary fixtures without emergency battery packs for design consistency.

800 SERIES

Applications: Indoor/Outdoor, Wall/Ceiling, Vertical/Horizontal
 Dimensions: 8⁷/₈" Square x 7¹/₂"



EM	EM2	EMO	EMO1	EMO2
1-18 PLT	N/A	1-18 PLT	N/A	N/A
1-26 PLT	N/A	1-26 PLT	N/A	N/A
1-32 PLT	N/A	1-32 PLT	N/A	N/A
1-42 PLT	N/A	1-42 PLT	N/A	N/A



EM	EM2	EMO	EMO1	EMO2
1-18 PLT	N/A	1-18 PLT	N/A	N/A
1-26 PLT	N/A	1-26 PLT	N/A	N/A
1-32 PLT	N/A	1-32 PLT	N/A	N/A
1-42 PLT	N/A	1-42 PLT	N/A	N/A

*HPF High Power Factory only.

1200 SERIES

Applications: Indoor/Outdoor, Wall/Ceiling, Vertical/Horizontal
 Dimensions: 12" Square x 8¹³/₁₆"



1200-EM-LED - LEDs operate during normal conditions and operate during emergency conditions.

EM	EM2	EMO	EMO1	EMO2
1-22 FL	N/A	1-22 FL	N/A	N/A
2-22 FL	N/A	N/A	2-22 FL	2-22 FL
2-13 QD*	N/A	N/A	2-13 QD*	2-13 QD*
2-26 PLC	2-26 PLC	N/A	2-26 PLC	2-26 PLC
2-18 PLT	2-18 PLT	N/A	2-18 PLT	2-18 PLT
2-26 PLT	2-26 PLT	N/A	2-26 PLT	2-26 PLT
2-32 PLT	2-32 PLT	N/A	2-32 PLT	2-32 PLT
2-42 PLT	N/A	N/A	2-42 PLT	N/A

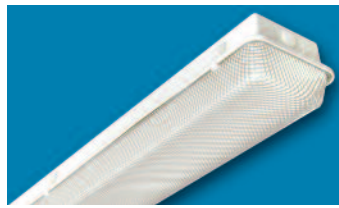


1200-WP-EM-LED - LEDs operate during normal conditions and operate during emergency conditions.

EM	EM2	EMO	EMO1	EMO2
2-26 PLC	2-26 PLC	N/A	2-26 PLC	2-26-PLC
2-18 PLT	2-18 PLT	N/A	2-18 PLT	2-18 PLT
2-26 PLT	2-26 PLT	N/A	2-26 PLT	2-26 PLT
2-32 PLT	2-32 PLT	N/A	2-32 PLT	2-32 PLT
2-42 PLT	N/A	N/A	2-42 PLT	N/A

ROUGH SERVICE SERIES

Dimensions: **RS100** – 25"(L) x 6⁵/₈"(W) x 5¹/₂"(D)
RS200 – 50"(L) x 6⁵/₈"(W) x 5¹/₂"(D)



Energy efficient fluorescent fixture. Indoor/Outdoor Covered Wall/Ceiling. Resists rust, corrosion, moisture, dust, and impact. Polycarbonate Lens. Nonconductive Housing. Two knock-outs provided.

MODEL	EM	EM2	EMO	EMO1	EMO2
RS100	N/A	N/A	N/A	N/A	2-17 FLT8
RS100	N/A	N/A	N/A	N/A	2-20 FLT12
RS200	2-40 FLT12	2-40 FLT12	N/A	N/A	2-40 FLT12
RS200	2-32 FLT8	2-32 FLT8	N/A	N/A	2-32 FLT8
RS200	2-54 FLT5	N/A	N/A	N/A	2-54 FLT5

HIGH ABUSE SERIES

Dimensions: **140** – 51"(L) x 4⁵/₈"(W) x 4⁷/₈"(D) **220** – 27"(L) x 9¹/₂"(W) x 3¹/₄"(D)
240 – 51"(L) x 9¹/₂"(W) x 3¹/₄"(D) **240S** – 51"(L) x 9¹/₂"(W) x 3¹/₄"(D)



Energy efficient fluorescent fixture. Indoor/Outdoor Covered Ceiling Installation. Resists rust, corrosion, moisture, dust, and impact. Polycarbonate Lens. Two knockouts provided. Surface mount conduit housing of powder-coated steel is available for Model 240.

MODEL	EM	EM2	EMO	EMO1	EMO2
140	1-40 FLT12	N/A	1-32 FLT8	N/A	N/A
140	1-32 FLT8	N/A	1-40 FLT12	N/A	N/A
140	2-40 PLL	N/A	N/A	N/A	N/A
140	1-54 FLT5	N/A	1-54 FLT5	N/A	N/A
220	N/A	N/A	N/A	N/A	2-17 FLT8
220	N/A	N/A	N/A	N/A	2-20 FLT12
240	2-32 FLT8	2-32 FLT8	N/A	N/A	2-32 FLT8
240	2-40 FLT12	2-40 FLT12	N/A	N/A	2-40 FLT12
240	2-54 FLT5	N/A	N/A	N/A	2-54 FLT5



Look for other rustproof, vandal resistant, nonconductive, energy efficient products on our web site at www.wfharrislighting.com or have your W. F. Harris Lighting Sales Representative or Distributor demonstrate how W. F. Harris Lighting can meet your lighting requirements.

What Kind Of Luminaire Do You Need? We Can Help!

- | | | |
|---------------------|--------------------|-----------------------------------|
| High Abuse | Rough Service | Indoor/Outdoor |
| Worklights | Linear Lighting | Spotlights |
| Floodlights | Landscape Lighting | Lighting with Graphics |
| Decorative Lighting | Wall Packs | High Intensity Discharge Fixtures |
| Emergency Lighting | | |

What Location Requirements or Applications Can Our Products Satisfy?

- | | | |
|--|---|-----------------------------------|
| Schools and Universities | Hotels and Motels | Condominiums and Apartments |
| Warehouses and Manufacturing Facilities | Farms and Agricultural Buildings | Restaurants/Food Industry |
| Military Housing and Field Maneuvers | Marine Search and Rescue | Boat and Yacht Lighting |
| Boat/Ship Building, Repair and Maintenance | Marinas and Boathouses | Beach and Coastal Lighting |
| Environmentally Responsible Lighting | Turtle Friendly Lighting | Residential/Commercial/Industrial |
| Motor Transport Repair and Maintenance | Aviation Production, Repair and Maintenance | |

Please note: Technology on Battery Pack Systems is progressing quickly. Please contact us for latest product availability.



W_FHarris Lighting

Innovative Lighting Designs Since 1970

4015 Airport Ext. Road • Monroe, NC 28110
 (800) 842-9345 (TOLL FREE) • (704) 283-7477 (MAIN OFFICE) • (704) 283-6880 (FAX)
WWW.WFHARRISLIGHTING.COM • E-MAIL: CUSTOMERSERVICE@WFHARRIS.COM