

FLUORESCENT



80 Series *Rust Resistant, Vandal Resistant Wall/Ceiling Luminaire* 42 Watts Maximum

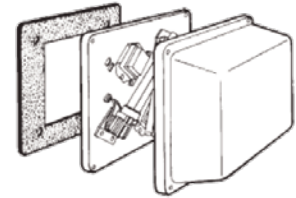
Designed for indoor/outdoor uses where a softly shaped, stylish fixture is desired in areas subject to vandalism or harsh environments. This luminaire is engineered with materials offering the **highest resistance to rust, corrosion, and impact**. The prismatic interior of the clear lens is designed to provide the greatest lumen output, and an increased impact strength. Ideally suited for schools, motels, apartments, parking areas, and commercial establishments.

Specifications

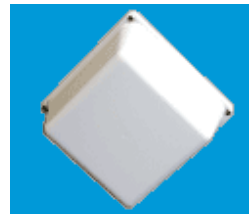
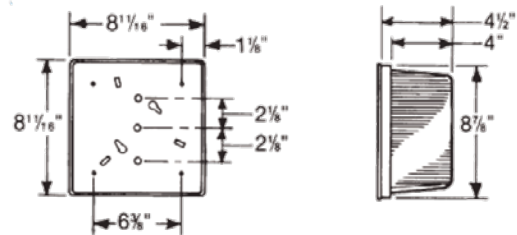
Lens:	Injection molded of UV-stabilized polycarbonate. Average thickness is 1/8". Smooth exterior surface for ease of cleaning.
Base Plate:	Rust resistant .063" 5052 H-32 tempered marine-grade aluminum.
Housing:	Injection molded of UV-stabilized reinforced bronze polycarbonate. Rear knockout for supply wire. Available with up to four threaded connections and plugs suitable for 1/2" or 3/4" conduit.
Gasket (Optional):	Closed-cell neoprene rubber in 1/8" thickness creates a tight seal against contaminants.
Socket:	Four-pin and two-pin type. Leads insulated for 105°C.
Lamp (Optional):	High-efficiency PL and PLT lamps offer up to 10 times longer life and 70% energy savings over incandescent lamps.
Ballast:	Self-start preheat Normal Power Factor for 120V. Available in electronic for 120-277V.
Hardware:	Four stainless-steel 8-32 phillips truss head screws or tamperproof screws attach lens to base plate. Mounting hardware included.



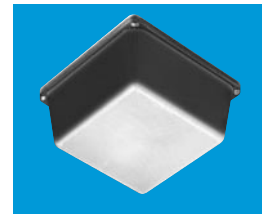
Exploded View



Dimensions



Shown With Opal White Lens



Shown With Painted Sides



**SBA QUALIFIED
SMALL BUSINESS MANUFACTURER**

TAA COMPLIANT
TRADE AGREEMENT ACT COMPLIANT

ETL-US and ETL-C Listed For Wet Locations.

All polycarbonate components meet Underwriters Laboratories 746C tests for polymeric material and carry a flammability rating of 94HB or better on lenses and the superior 94-5V rating on housings.

Luminaire Type _____
 Catalog Number _____
 Job Name _____
 Approval _____

W.F. Harris Lighting, Inc.™

Innovative Lighting Designs Since 1970

P.O. Box 5023, Monroe, NC 28111-5023, USA

704.283.7477 (HEADQUARTERS) • 800.842.9345 (TOLL FREE)

e-mail: customerservice@wfarris.com

www.wfarrislighting.com

Form 1552

5/19

"A Life Operator Company Standing Ready to Serve Your Lighting Needs."

FLUORESCENT

Ordering Information (Fill In Blanks For Complete Catalog Number)

Model	Lens	Watts/Lamp	Power Factor	Volts	Options	Conduit Connection
Model	Lens Color	Watts/Lamp	Power Factor	Volts	Options	Conduit Connection
80	CP-Clear Prismatic OW-Opal White	7 PL or 9 PL or 13 PL 2-9 PL 2-13 PL 2-13 QD 18 PLT* 26 PLT* 32 PLT* ¹ 42 PLT* ¹	NPF HPF	120 120-277	LP-Lamp TPS-Tamperproof Screws FS-Fuse Holder Graphics-Numbers and Letters PS-BZ-Painted Sides/CP Lens - Bronze Only PC-Photo Control (Specify 120V or 277V) 80HW-White Housing 80HB-Bronze Housing GCO-Grounded Convenience Outlet ^{1,2} SW/B-On/Off Switch with Boot EM(1 Lamp)-One Lamp Operates Full time and During Emergency EM(2 Lamp)-Two Lamps Operate Full time and 1 Lamp Operates During Emergency EMO(1 Lamp)-One Lamp Only Operates During Emergency EMO(2 Lamp)-One Lamp Operates During Normal Conditions and One Lamp Operates During Emergency.	CRS-Right Side CLS-Left Side CT-Top CB-Bottom 4-All (Positions Based on Facing Fixture)

*Electronic

¹80HB or 80HW Housing Required

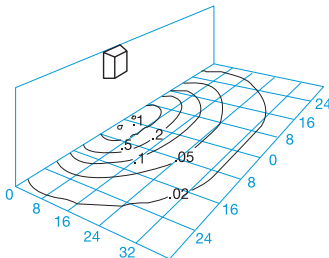
²Dry Location Only

³EMO Not Available

Accessories (Order Separately) 
TPT-Tamperproof Screwdriver

Light Distribution Patterns

Model 80-CP-2-9 PL
Wall Mounted 8' M.H.
Produced From Test Report 32514



Using Conversion Table
TO ADJUST FOOTCANDLES (FC) SHOWN IN
DIAGRAMS BELOW, USE FOLLOWING
FORMULA WITH LAMP CONVERSION
FACTOR (LCF) AND HEIGHT CONVERSION
FACTOR (HCF):

$FC \times LCF = FC$ with alternate lamp
 $FC \times HCF = FC$ at alternate height
 $FC \times LCF \times HCF = FC$ with alternate lamp
at alternate height

Lamp	Lamp Conversion Factor	Mounting Height	Height Conversion Factor
2-9 PL	1.00	6'	1.77
13 PL	.75	8'	1.00
2-7 PL	.67	10'	.64
9 PL	.50		
7 PL	.33		
18 PLT	1.00		
26 PLT	1.50		
32 PLT	2.00		
42 PLT	2.67		

Fluorescent Lamp Performance

	Input Watts	Lumen Output	Lamp Life (Hours)	Min. Starting Temperature
7 Watt PL	11W	400	10,000	0°F
9 Watt PL	13W	600	10,000	25°F
13 Watt PL	17W	900	10,000	32°F
(2) 7 Watt PL	22W	800	10,000	0°F
(2) 9 Watt PL	26W	1,200	10,000	25°F
(2) 13 Watt QD	26W	1560	10,000	32°F
18 Watt PLT	18W	1,200	10,000	0°F
26 Watt PLT	26W	1,800	10,000	0°F
32 Watt PLT	32W	2,400	10,000	0°F
42 Watt PLT	42W	3,200	10,000	0°F

Specifications Subject to Change Without Notice

Luminaire is Warranted to be Free of Defects in Materials and Workmanship for One Year From Invoice Date.

LENS AND HOUSING CARRY A LIFETIME WARRANTY.



**SBA QUALIFIED
SMALL BUSINESS MANUFACTURER**

TAA COMPLIANT
TRADE AGREEMENT ACT COMPLIANT

W.F. Harris Lighting, Inc.™

Innovative Lighting Designs Since 1970

P.O. Box 5023, Monroe, NC 28111-5023, USA

704.283.7477 (HEADQUARTERS) • 800.842.9345 (TOLL FREE)

e-mail: customerservice@wfharris.com

www.wfharrislighting.com

"W. F. Harris Lighting Will Not Sacrifice Quality for the Sake of Price."