

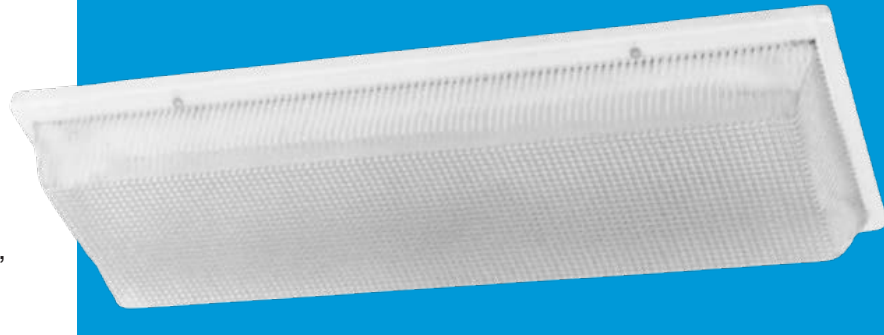
FLUORESCENT



220 Series

Rustproof Vandal-Resistant Ceiling Luminaire

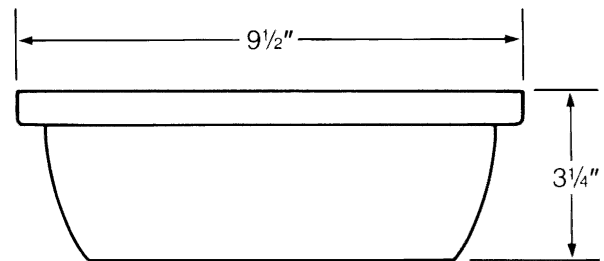
This fluorescent luminaire combines optional light distribution and energy efficiency with impact resistance in an aesthetically attractive design. Options such as an emergency battery system and a PL fluorescent night light eliminate the need for special-purpose lighting. For indoor and covered ceiling outdoor uses, this luminaire is perfect for schools, hospitals, prisons, and public, commercial, and government buildings.



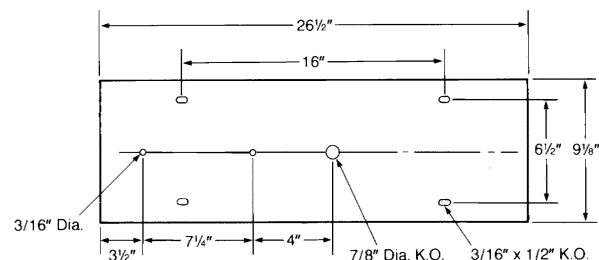
Specifications

Lens:	Pressure formed of UV-stabilized polycarbonate in an average 1/8" thickness. Clear lens is enhanced with prisms engineered for maximum light control.
Base Plate	Die formed of 20-gauge steel with high-reflectance white baked enamel finish applied after forming (Post Painted).
Gasket:	Concealed polyethylene gasket is bonded to lens to create a tight seal against contaminants and moisture.
Wireway:	Toolless tab attachment facilitates installation and removal of wireway channel.
Ballast:	2-17FLT8 and 2-40PLL lamp ballasts with 0°F start. All ballast types are high power factor, thermally-protected Class P for 120-277 volts. Class P 120 ballast for 9W Night Light only.
Hardware:	Four stainless-steel philips head or optional tamperproof screws are provided for lens attachment.

Dimensions



Base Plate Hole Pattern



**SBA QUALIFIED
SMALL BUSINESS MANUFACTURER**
TAA COMPLIANT
TRADE AGREEMENT ACT COMPLIANT

ETL-US and ETL-C Listed For Damp Location Covered Ceiling

All polycarbonate components meet Underwriters Laboratories 746C tests for polymeric material and carry a flammability rating of 94HB or better on lenses and the superior 94-5V rating on housings.

Luminaire Type _____
 Catalog Number _____
 Job Name _____
 Approval _____

WF Harris Lighting, Inc.™

Innovative Lighting Designs Since 1970
 P.O. Box 5023, Monroe, NC 28111-5023, USA
 704.283.7477 (HEADQUARTERS) • 800.842.9345 (TOLL FREE)
 e-mail: customerservice@wfharris.com
 www.wfharrislighting.com

FLUORESCENT

Ordering Information (Fill In Blanks For Complete Catalog Number)

Model	CP Lens	Watts-Lamp	HPF Power Factor	Volts	Options
Model	Lens Color	Watts/ Lamp	Power Factor	Volts	Options
220	CP-Clear Prismatic	2-40 PLL ¹ 2-17 FLT8 ¹	HPF	120-277	FS -Fuse and Holder FNLP-120-9W PL Night Light with Lamp (Second Ballast is 120V Only) FNL-120 - 9W PL Night Light Ballast/Socket Only (Second Ballast is 120V Only) TPS -Stainless Steel Tamperproof Screws WLO-220 -Wet Location Outside Gasket (Must Specify Application) (Not required for covered ceiling application) EMO2 -Emergency Mode Only

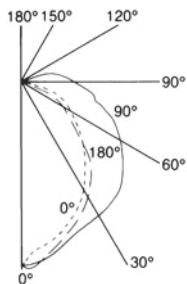
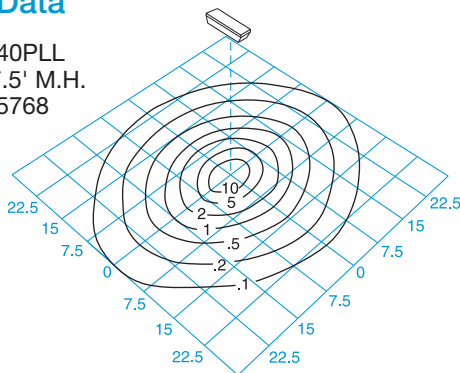
Accessories (Order Separately)
TPT-Tamperproof Screwdriver



¹ Available HPF 120-277 Only

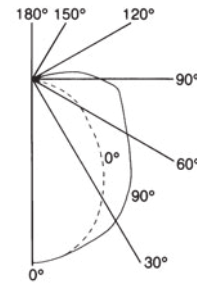
Photometric Data

Model 220-CP-2-40PLL
 Ceiling Mounted 7.5' M.H.
 Test Report No. 35768



Using Conversion Table
 TO ADJUST FC, USE FOLLOWING
 FORMULA WITH HEIGHT CONVER-
 SION FACTOR (HCF):
 $FC \times HCF = FC \text{ at alternate height}$

Mounting Height	Height Conversion Factor
7.5'	1.00
8'	.88
9'	.69
10'	.56
12'	.40



COEFFICIENTS OF UTILIZATION - ZONAL CAVITY METHOD EFFECTIVE FLOOR CAVITY REFLECTANCE 0.20

Model 220-CP-2-40PLL

RC	80				70				50				30				10				0															
RW	70	50	30	10	70	50	30	10	50	30	10	50	30	10	50	30	10	50	30	10	50	30	10	50	30	10	50	30	10	50	30	10				
1	55	52	50	48	53	51	48	48	48	46	44	44	42	42	41	40	40	36	36	36	32	32	31	28	27	27	27	27	27	27	27	27				
2	50	46	42	39	48	44	41	38	42	39	36	39	37	35	37	35	33	32	32	32	27	27	27	27	27	27	27	27	27	27	27	27				
3	46	40	36	32	44	39	35	32	37	33	31	35	32	29	33	30	28	27	27	27	27	27	27	27	27	27	27	27	27	27	27	27				
4	42	36	31	28	41	35	31	27	33	29	26	31	28	25	30	27	25	23	23	23	23	23	23	23	23	23	23	23	23	23	23	23	23			
5	39	32	27	24	37	31	27	23	29	26	23	28	25	22	20	24	21	20	20	20	20	20	20	20	20	20	20	20	20	20	20	20	20			
6	36	29	24	21	34	26	23	20	26	23	20	25	22	19	24	21	19	17	17	17	17	17	17	17	17	17	17	17	17	17	17	17	17			
7	33	26	21	18	32	25	21	18	24	20	17	23	19	17	22	19	15	15	15	15	15	15	15	15	15	15	15	15	15	15	15	15	15	15		
8	30	23	19	16	29	23	18	15	22	18	15	21	17	15	20	17	14	13	13	13	13	13	13	13	13	13	13	13	13	13	13	13	13	13	13	
9	28	21	17	14	27	21	16	14	20	16	13	19	15	13	18	15	13	12	12	12	12	12	12	12	12	12	12	12	12	12	12	12	12	12	12	
10	26	19	15	12	25	19	15	12	18	14	12	17	14	12	16	13	11	10	10	10	10	10	10	10	10	10	10	10	10	10	10	10	10	10	10	10

Model 220-CP-2-20FLT12

RC	80				70				50				30				10				0																		
RW	70	50	30	10	70	50	30	10	50	30	10	50	30	10	50	30	10	50	30	10	50	30	10	50	30	10	50	30	10	50	30	10	50	30	10	50	30	10	
1	60	57	54	51	58	55	52	50	51	49	47	48	46	44	45	43	42	40	40	40	36	36	36	32	32	31	28	27	27	27	27	27	27	27	27	27			
2	55	49	45	42	52	48	44	41	45	42	39	42	39	37	39	37	36	34	34	34	32	32	31	29	29	29	29	29	29	29	29	29	29	29	29	29	29	29	
3	50	44	39	35	46	43	38	35	40	36	33	38	35	32	35	33	31	29	29	29	27	27	27	27	27	27	27	27	27	27	27	27	27	27	27	27	27		
4	46	39	34	30	44	38	33	30	36	32	26	34	30	27	32	29	26	25	25	25	25	25	25	25	25	25	25	25	25	25	25	25	25	25	25	25	25		
5	42	35	30	26	41	34	29	26	32	28	25	30	27	24	29	26	23	22	22	22	22	22	22	22	22	22	22	22	22	22	22	22	22	22	22	22	22	22	
6	39	32	27	23	38	31	26	23	29	25	22	26	24	21	26	23	21	19	19	19	19	19	19	19	19	19	19	19	19	19	19	19	19	19	19	19	19	19	
7	38	29	24	20	35	26	23	20	27	22	19	25	22	19	24	21	18	17	17	17	17	17	17	17	17	17	17	17	17	17	17	17	17	17	17	17	17	17	
8	34	26	21	18	33	26	21	18	24	20	17	23	19	17	22	19	16	15	15	15	15	15	15	15	15	15	15	15	15	15	15	15	15	15	15	15	15	15	
9	32	24	19	16	30	23	19	16	22	18	15	21	18	15	20	17	15	14	14	14	14	14	14	14	14	14	14	14	14	14	14	14	14	14	14	14	14	14	14
10	29	21	17	14	29	21	16	13	20	16	13	19	15	13	18	15	13	12	12	12	12	12	12	12	12	12	12	12	12	12	12	12	12	12	12	12	12	12	12

Specifications Subject to Change Without Notice

Luminaire is Warranted to be Free of Defects in Materials and Workmanship for One Year From Invoice Date.



**SBA QUALIFIED
 SMALL BUSINESS MANUFACTURER**

**TAA COMPLIANT
 TRADE AGREEMENT ACT COMPLIANT**

W.F. Harris Lighting, Inc.™

Innovative Lighting Designs Since 1970

P.O. Box 5023, Monroe, NC 28111-5023, USA
 704.283.7477 (HEADQUARTERS) • 800.842.9345 (TOLL FREE)
 e-mail: customerservice@wfarris.com
 www.wfarrislighting.com

"W. F. Harris Lighting Will Not Sacrifice Quality for the Sake of Price."