

ENERGY EFFICIENT LED WALLPACK

Model 80-WP-LED-2K4 *Rustproof • Wet Location Listed*
Vandal Resistant

APL: 24A160003, NSN: 6220-01-652-8646



Energy saving, energy efficient indoor/outdoor wallpack luminaire where style is as important as endurance, dependability and reduced operating costs. **Engineered with materials offering high resistance to rust, corrosion and impact.** The **polycarbonate** housing is non-conductive, assuring more safety to the end user. Smooth exterior **polycarbonate** lens trimmed in bronze high-temperature, weather-resistant polyurethane paint allows ease of cleaning; clear prismatic interior assures high lumen output; and rounded corners provide increased impact strength and user safety. Ideally suited in applications for building interiors and exteriors, walkways, ceilings and walls in grocery stores, hospitals, schools, universities, military installations and government establishments. Luminaire utilizes high quality LEDs and Driver to further enhance reliability and durability while reducing power consumption.

LEDs contain no mercury and emit no ultraviolet light.

LEDs will not break, unlike conventional lamps, if the luminaire is dropped.

Specifications

Lens: Injection molded frosted clear lens of UV-stabilized **polycarbonate** trimmed in bronze high-temperature, weather-resistant polyurethane paint. Average thickness is .125". Lens interior provides optimal light output and diffusion; smooth exterior surface allows ease of cleaning; rounded corners increase impact strength and user safety.

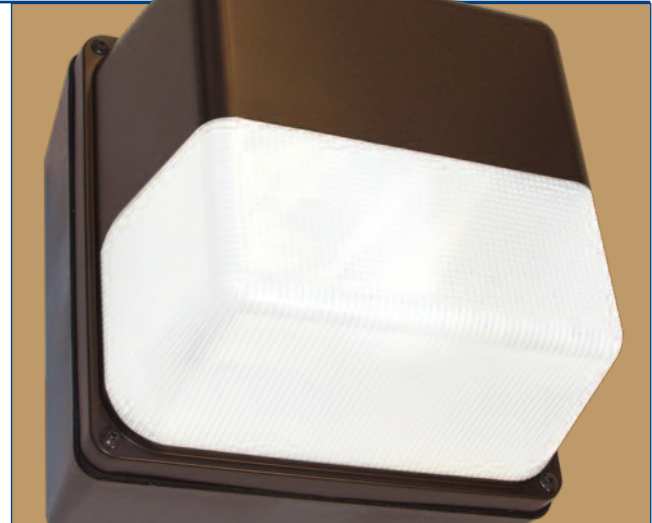
Base Plate: **Rustproof** .080" 5052 H-32 tempered marine-grade aluminum.

Housing: Injection molded of UV-stabilized reinforced bronze **polycarbonate**. Rear knockout for supply wire.

Gasket: Lens gasket and mounting gasket are closed-cell neoprene rubber.

LEDs: **High Quality Lighting Grade White LEDs**
5,000K Color Temperature.
Net Lumens: 2424 Power: 21.5 W Efficacy: 113 Lm/W
Warranted for five (5) years.

LED Life: Lumen Maintenance (TM-21-11 70% Projection)
410,000 Hrs (25°C/77°F) = 47 Years of 24/7 LED life
155,000 Hrs (50°C/122°F) = 18 Years of 24/7 LED life
Calculations based on US Department of Energy Worksheet
DOE TM-21-11, 70%



Driver: **High Quality Driver**
Class 2 Power Supply.
AC Input 120-277V, 50/60Hz.



Complies with FCC rules and regulations, as per Title 47 CFR Part 15 Non-Consumer (Class A) for EMI/RFI (conducted and radiated) at full load.

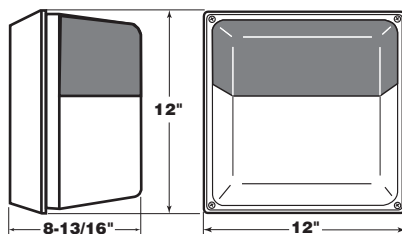
Warranted for five (5) years by Driver manufacturer.

Hardware: Four stainless steel 8-32x3/8 phillips truss head screws attach lens to base plate. Four zinc-plated steel 1/4-15x3/4 phillips pan head screws attach base plate to housing.

LENS AND HOUSING CARRY A LIFETIME WARRANTY AGAINST BREAKAGE.

Specifications Subject to Change Without Notice.

Dimensions



ETL-US and ETL-C Listed for Wet Location (UL1598)
LM-79 and LM-80 Test Data Available

All polycarbonate components meet Underwriters Laboratories 746C tests for polymeric material and carry a flammability rating of 94HB or better on lenses and the superior 94-5V rating on housings.



SBA QUALIFIED
SMALL BUSINESS MANUFACTURER

TAA COMPLIANT
TRADE AGREEMENT ACT COMPLIANT

WF Harris Lighting, Inc.

Innovative Lighting Designs Since 1970

P.O. Box 5023, Monroe, NC 28111-5023, USA
704.283.7477 (HEADQUARTERS) • 800.842.9345 (TOLL FREE)

e-mail: customerservice@wfharris.com

www.wfharrislighting.com

Form 3514

5/17